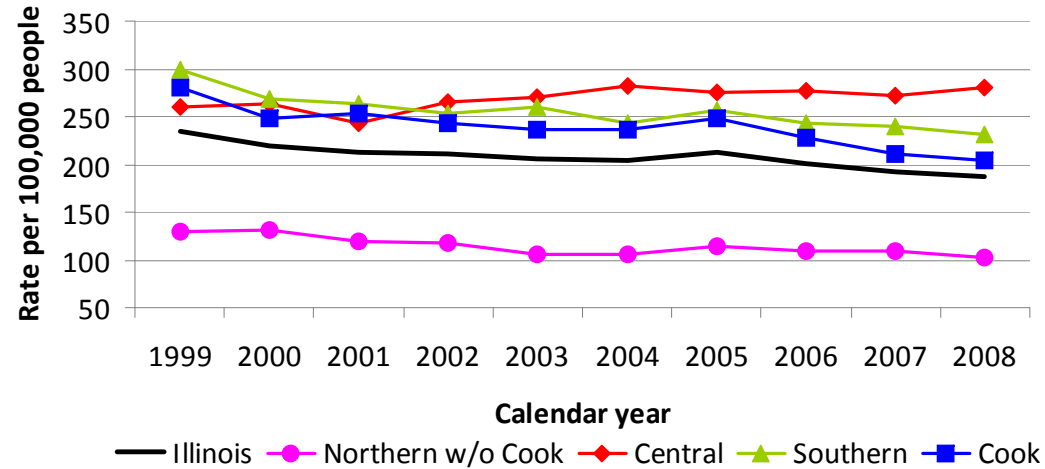
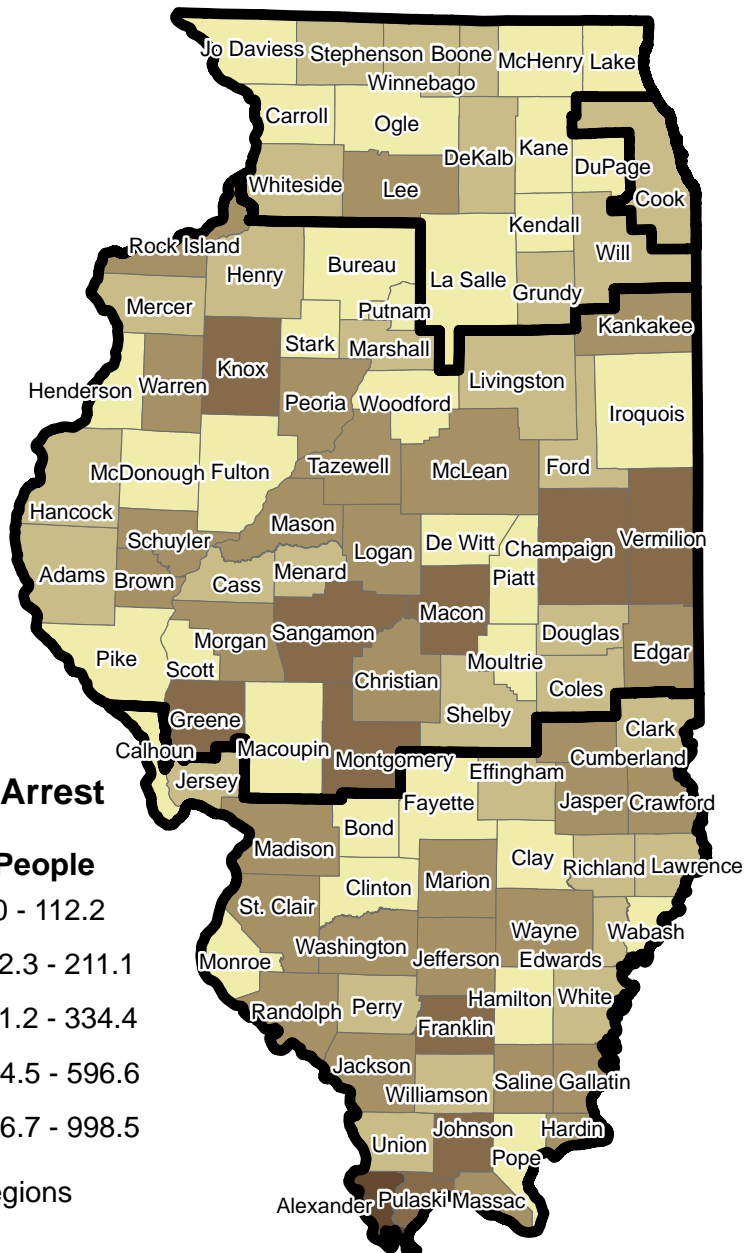


I-UCR Violent Arrest Rate per 100,000 People CY2008

I-UCR Violent Arrest Rate per 100,000 People CY1999-2008



- The violent Index arrests include four major categories: murder, criminal sexual assault, robbery and aggravated assault. Definitions of these arrest categories can be found in the most recent edition of Crime in Illinois. Characteristics of persons arrested are not collected in Illinois' Uniform Crime Reporting (I-UCR) program. Further, it is not possible to identify juvenile arrestees separate from adults.
- In 2008, there were 24,196 reported arrests for violent Index crimes. The map above shows the distribution of these arrests by county, in terms of rate per 100,000 persons.
- Seventy-one percent of reported violent Index arrests were for aggravated assault, 20 percent were for robbery, 6 percent were for criminal sexual assault, and 2 percent were for murder.
- In Illinois, the total reported violent Index arrest rate decreased 20 percent from 1999 through 2008 (from 235 per 100,000 persons to 188 per 100,000 persons).
- From 1999 through 2008, there was a 21 percent decrease in the violent arrest rate in the Northern region outside Cook County, a 22 percent decrease in the Southern region, a 26 percent decrease in Cook County, and a 8 percent increase in the Central region. (See map for these geographic regions).
- Specifically, within Cook county the arrest rate for murder decreased 38 percent from 1999 through 2008 (from 13 per 100,000 persons to 8 per 100,000 persons); the arrest rate for criminal sexual assault as well as for aggravated assault decreased 33 percent; and the arrest rate for robbery decreased four percent.